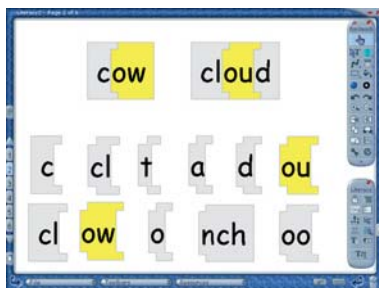
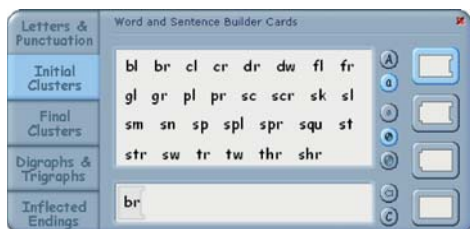


Word and Sentence Builder Cards



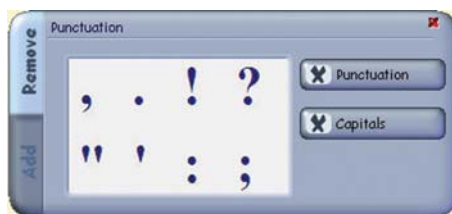
- Use these to help teach phonics, spelling and grammar.
- Cards can be filled with predefined text, or you can type your own entries.
- Once cards are placed on the page, typing into them can change their content.



- Both the color of the text and the color of the card can be changed. Cards can contain parts of words, whole words or phrases.

Punctuation Bank

- Symbols that can be 'dragged' into existing text.
- The **Punctuation** button removes all punctuation from the current page.
- The **Capitals** button removes all capitals from the current page.

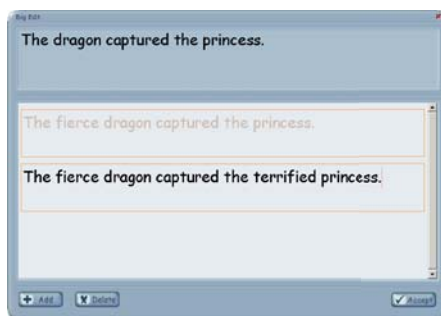


- Stripe select some text and then use the **Punctuation** button to focus only on part of the text.
- Punctuation can be removed from any text, including material you have pasted into Easiteach from the internet or elsewhere.

Big Edit

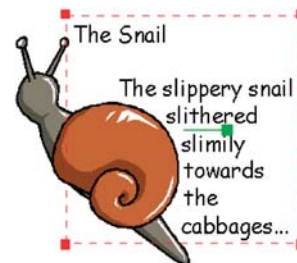
- Focuses on improving text through editing.
- Select some text and click **Big Edit**.
- Make a change and click **Add**.
- When editing is complete, click **Accept**.

- You could click **Add** three times and ask three pupils to suggest their own versions.



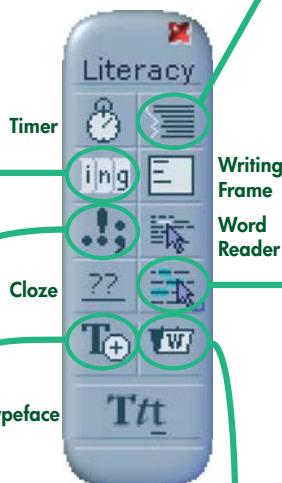
Repel Text

- Aligns text with the edge of a line or object.
- Select the text you wish to repel and click **Repel**.



- Use this facility to create shape poems.

Easiteach ELA Toolbar



Highlight Tool

- Allows you to tag word types in different colors.
- Simply select a highlight color and click the words to be tagged.

— nouns
— verbs

The _____ tree had _____ branches.



Cloze Underline and Word Wallet

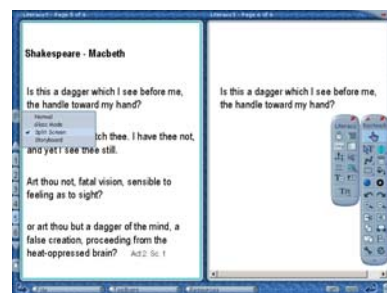
- Allows you to easily create cloze activities.
- Click on **Cloze** and then on the words to remove.
- Words can be typed into cloze spaces, or 'dragged' from the **Word Wallet** or from another page (works well in **Split Screen** mode).
- Words removed with **Cloze** are automatically placed in the **Word Wallet**.

- Remove all the adjectives from a piece of descriptive text and replace with different adjectives to change the tone of the piece.

Split Screen

- View and work on any 2 pages of a document at the same time.
- You can drag text or other objects from one page to another.

- Copy some text from an internet page of tourist information on one page and create an advertisement on the facing page.
- Use a facing page to analyze and focus on parts of a larger text.



myeasiteach.com

Need some great subject-focused lessons?
Free Easiteach Sharing Community